

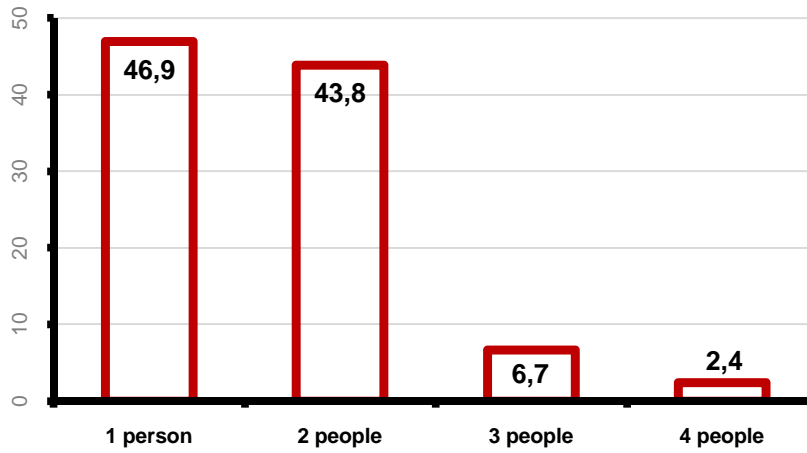
THE ECONOMIC CONDITIONS, CONSUMING HABITS IN IZMIR AND ECONOMIC EXPECTATIONS FROM 2008

The results regarding the economic conditions of people living in Izmir and their economic expectations from 2008 and their general consuming habits are shown below.

RESEARCH PROJECTS WHICH THE RESULTS DEPEND ON			
<i>[MAY, 2007]</i>	"THE POLITICAL ORIENTATIONS AND VOTING BEHAVIORS"	<i>[JUNE, 2007]</i>	"THE SYMBOLS OF IZMIR AND POLITICAL ORIENTATIONS"
	3000 participants from 9 metropolitan districts in Izmir		3064 participants from 9 metropolitan districts in Izmir
<i>[MARCH, 2008]</i>	"THE ECONOMIC ECPECTIONS, EXPO 2015 & POLITICAL ORIENTATIONS"	<i>[JUNE, 2008]</i>	"CONSUMING HABITS AND BEHAVIORS OF PEOPLE LIVING IN IZMIR"
	2006 participants from 18 different districts in Izmir		660 participants from 9 metropolitan districts in Izmir

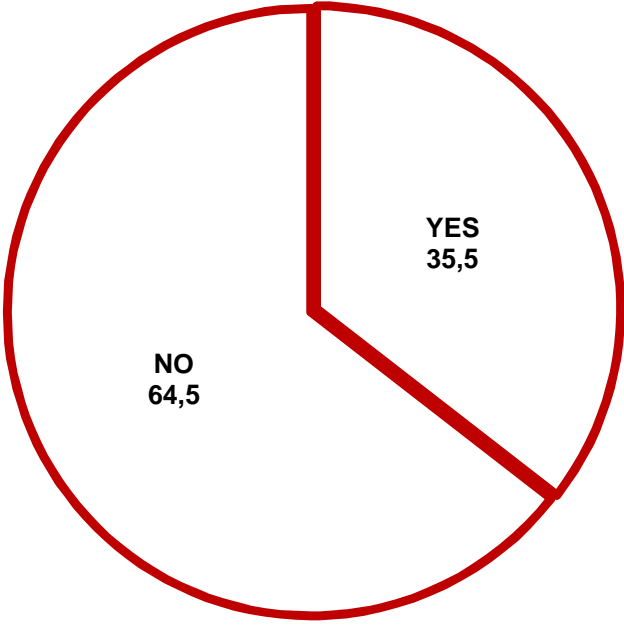
THE NUMBER OF EMPLOYED MEMBERS OF HOUSEHOLD (%)

[Consumer habits, July - 2008]



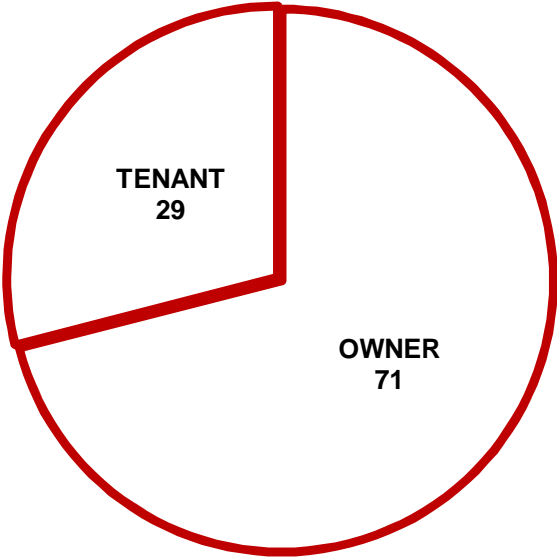
**IS THERE ANY UNEMPLOYED MEMBERS
OF HOUSEHOLD (%)**

[Political orientations & Symbols of Izmir, June -
2007]

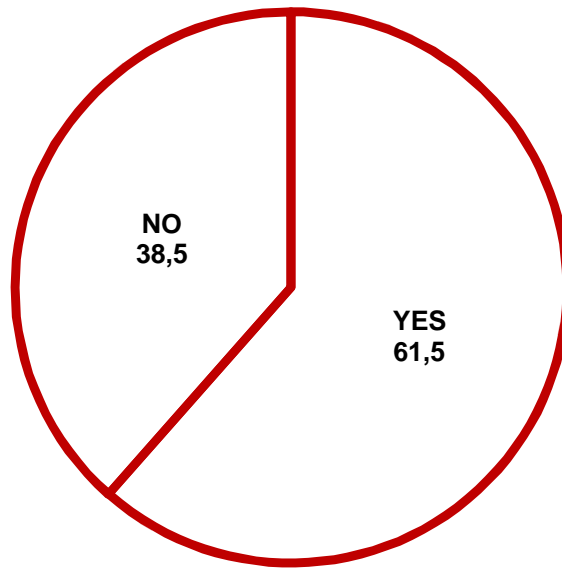


**THE OWNERSHIP STATUS OF
RESIDENCE (%)**

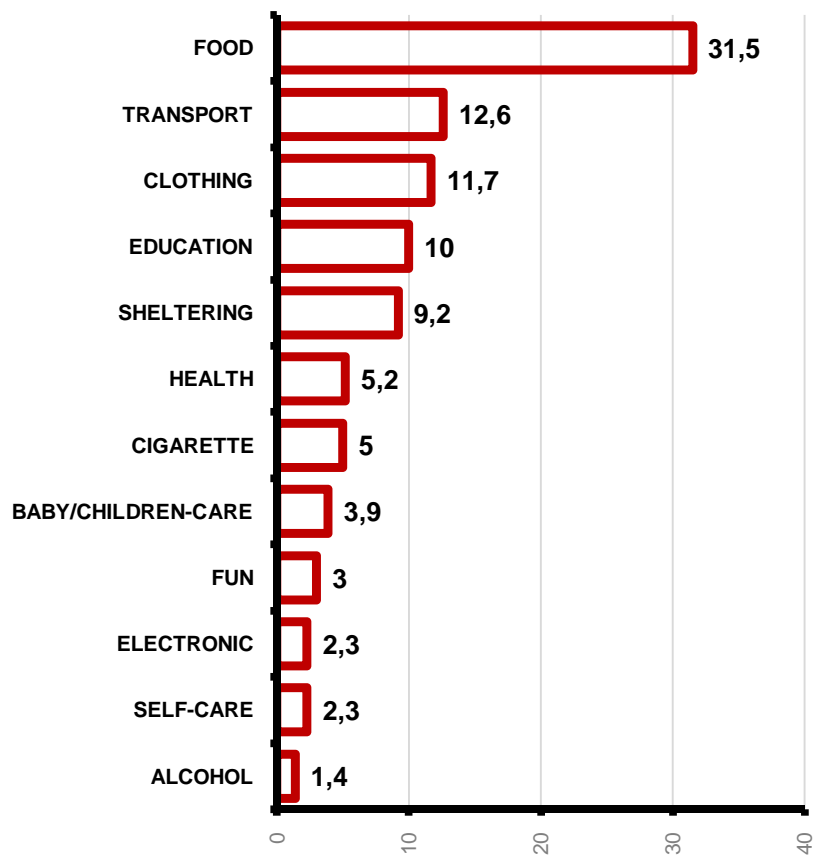
[Consumer habits, July - 2008]



CAR OWNERSHIP (%)
[Consumer habits, July - 2008]

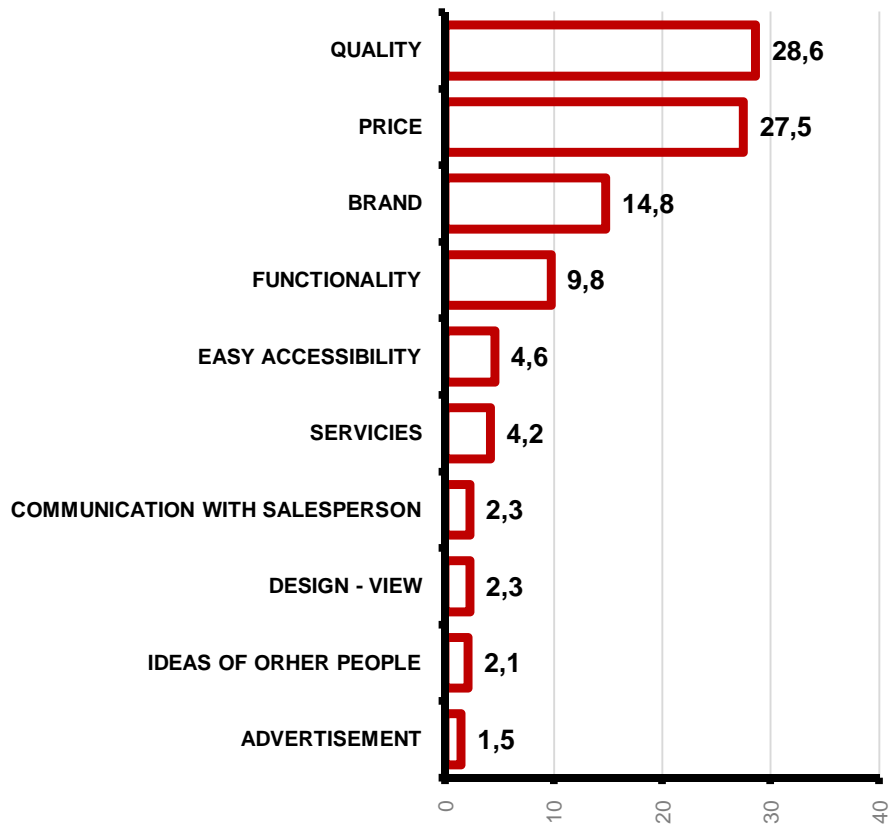


PRIMARY EXPENSES FOR A MONTH(%)
[Consumer habits, July - 2008]



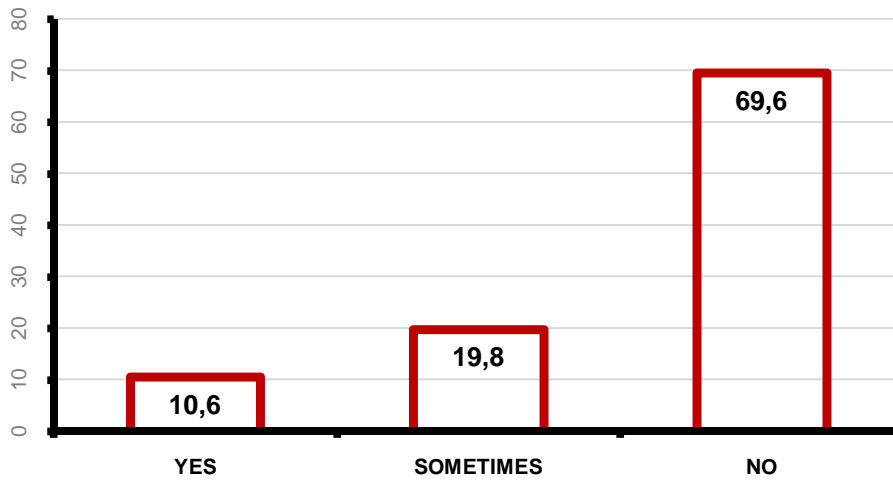
THE MOST IMPORTANT CRITERIA FOR PURCHASE (%)

[Consumer habits, July - 2008]



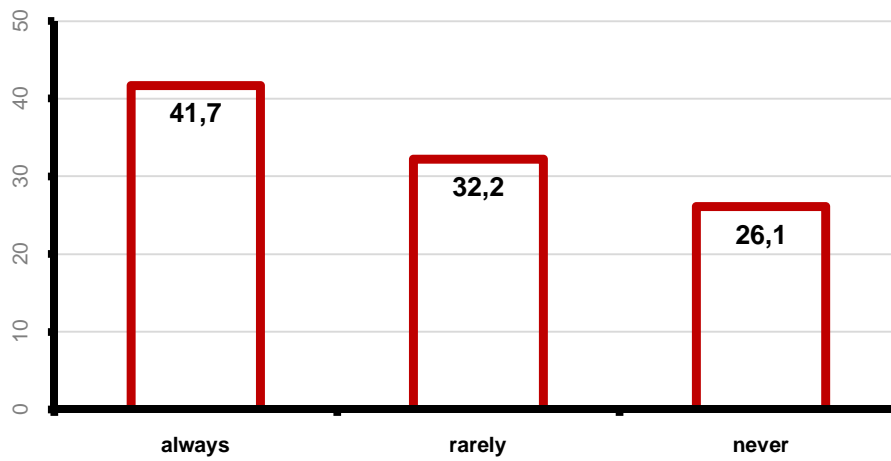
ON-LINE SHOPPING HABITS (%)

[Consumer habits, July - 2008]



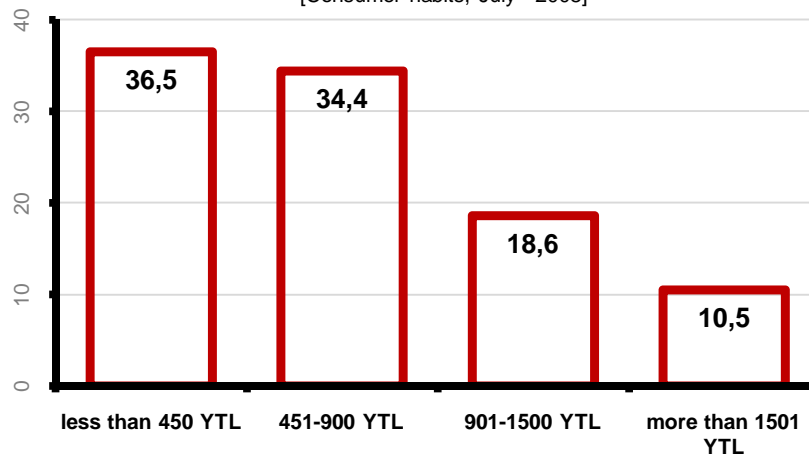
DO THE PARTICIPANTS USE A CREDIT CARD? (%)

[Consumer habits, July - 2008]



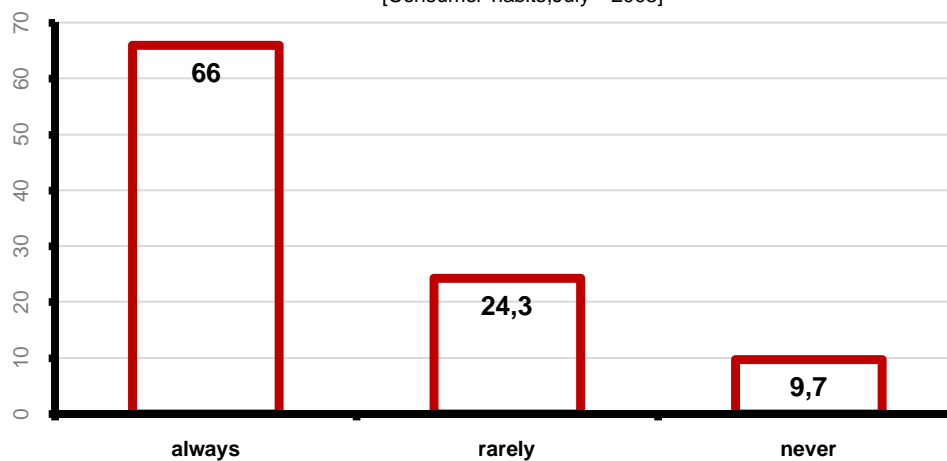
AVERAGE CREDIT CARD SPENDING FOR A MONTH (%)

[Consumer habits, July - 2008]



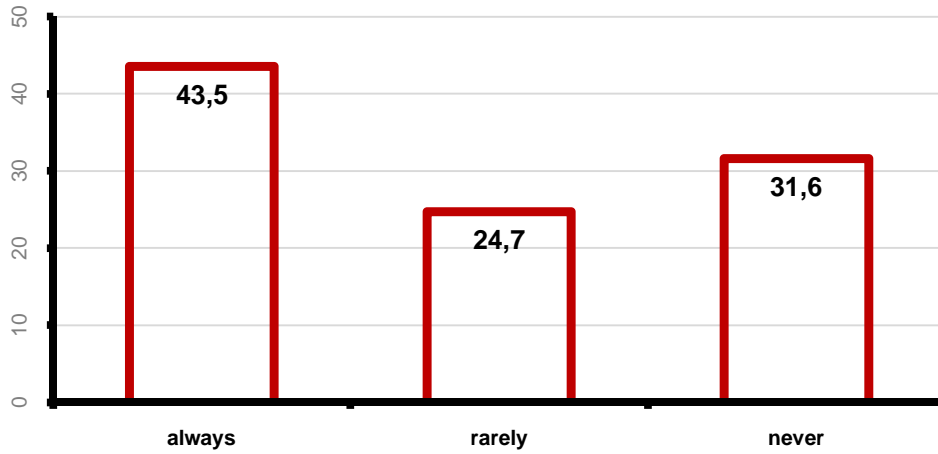
DO THE PARTICIPANTS ASK FOR INVOICE AFTER SHOPPING? (%)

[Consumer habits, July - 2008]



DO THE PARTICIPANTS KEEP TILL SLIPS AND CREDIT CARD SLIPS ? (%)

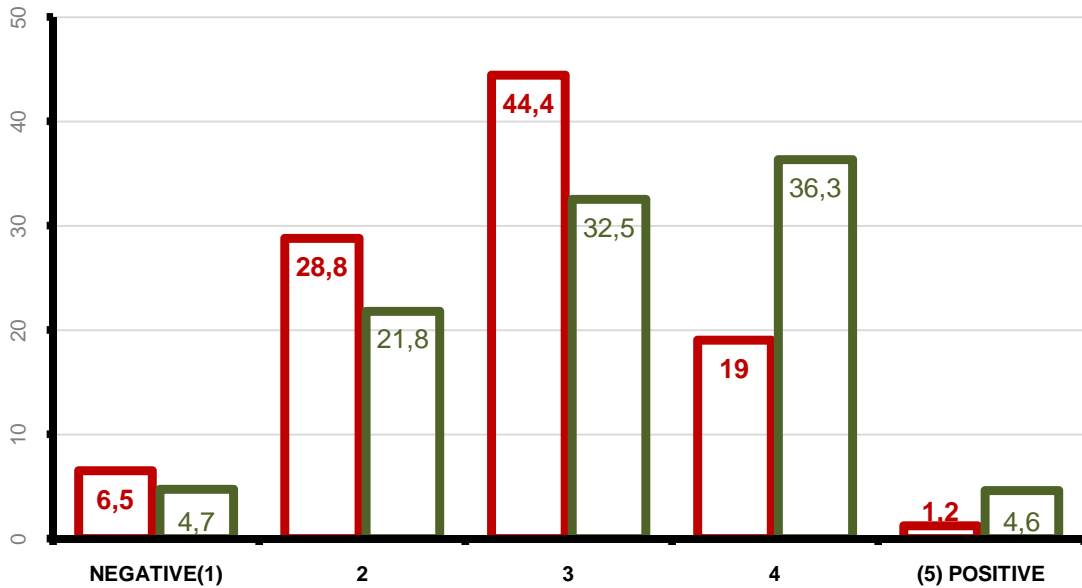
[Consumer habits, July - 2008]



HOW DO PARTICIPANTS EVALUATE THEIR OWN ECONOMIC CONDITIONS? (%)

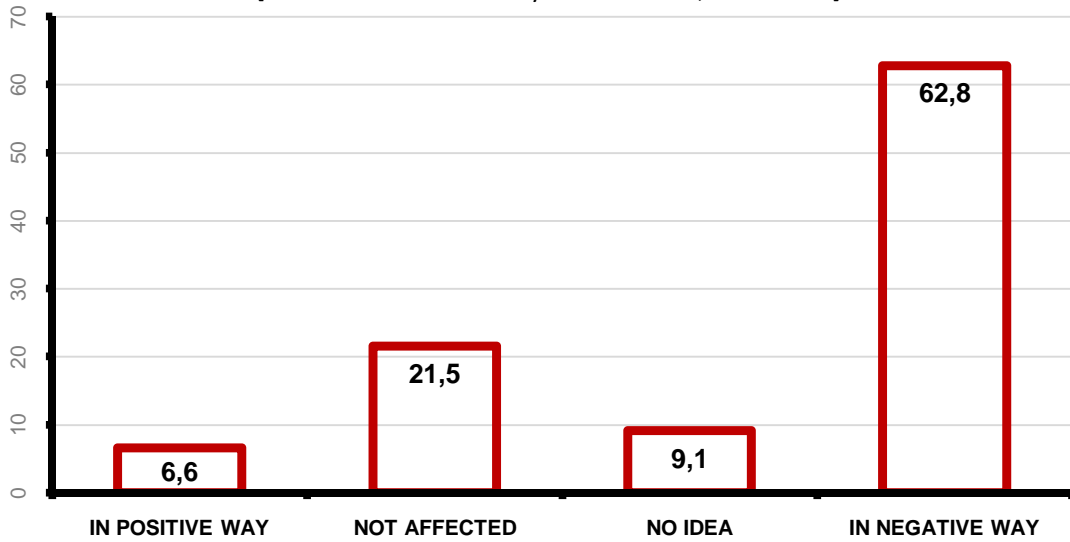
[Consumer habits, July - 2008]

previous 6 months --- forthcoming 6 months



HOW DO PARTICIPANTS EVALUATE THE EFFECTS OF
CURRENT POLITICAL ISSUES ON GENERAL ECONOMIC
CONDITIONS?(%)

[Political orientations & Symbols of Izmir, June - 2007]

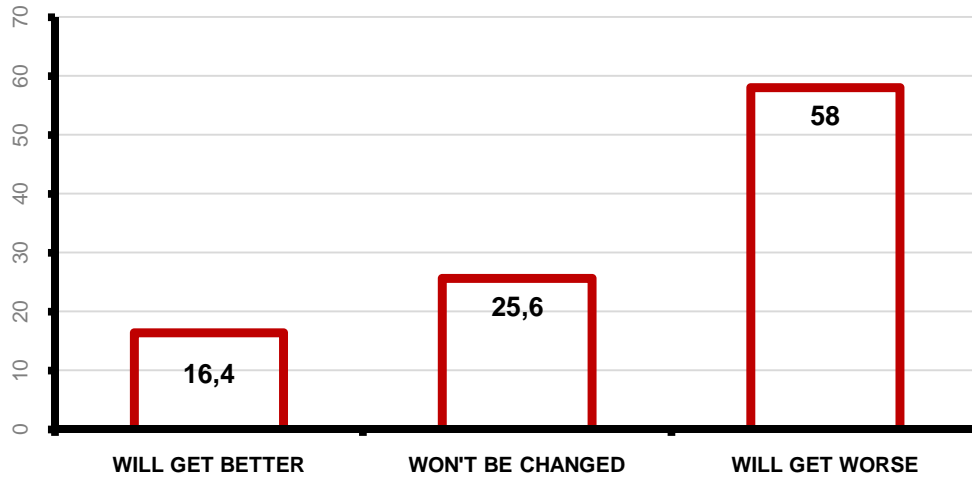


HOW THE ECONOMIC INDICATORS WILL CHANGE AFTER THE
GENERAL ELECTIONS ?(%)

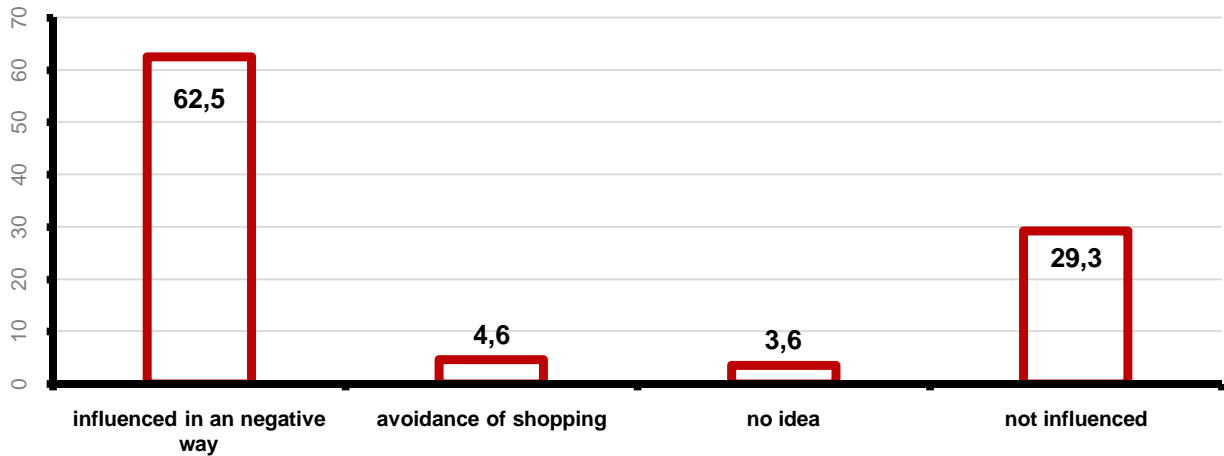
[Consumer habits, July - 2008]



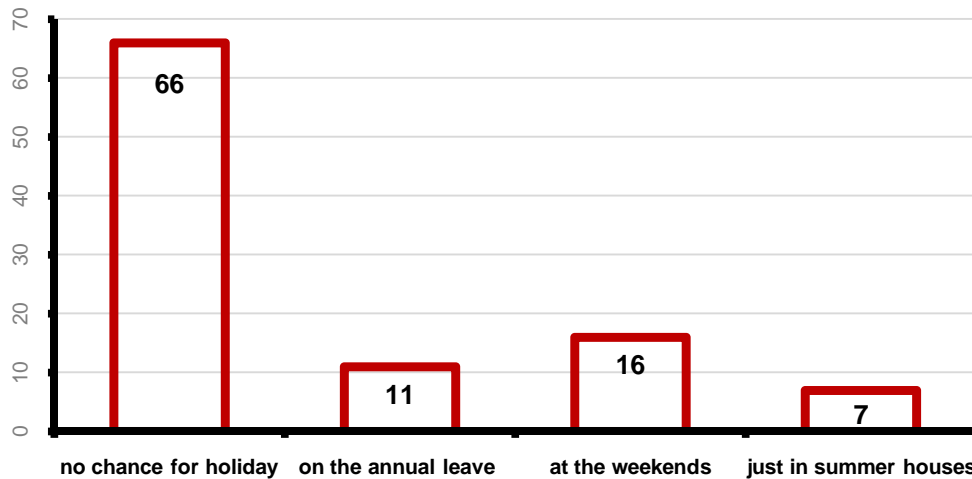
THE ECONOMIC EXPECTATIONS ON 2008 (%)
[Political orientations and Local Government Elections, March - 2008]



HOW DID CURRENT POLITICAL ISSUES AFFECT THE CONSUMING HABITS?(%)
[Political orientations and Local Government Elections, March - 2008]

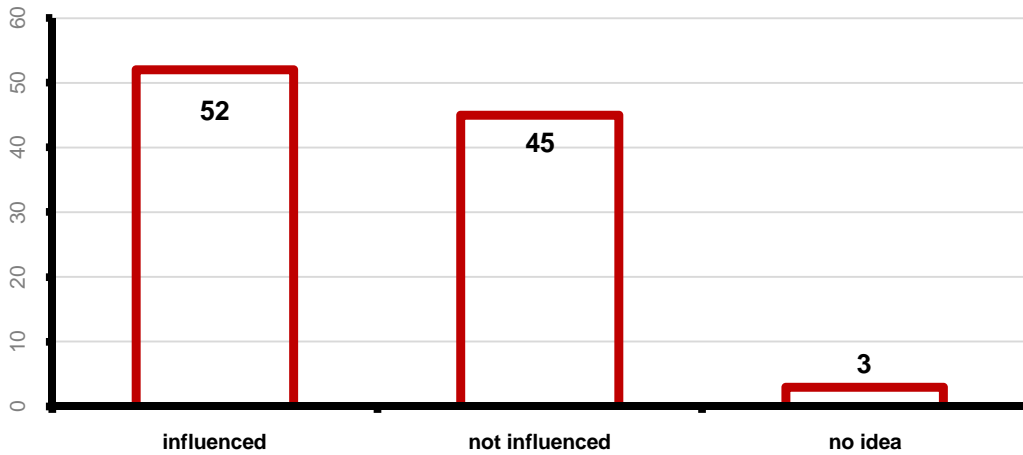


THE HOLIDAY HABITS OF PARTICIPANTS (%)
[Political orientations & Symbols of Izmir, June - 2007]

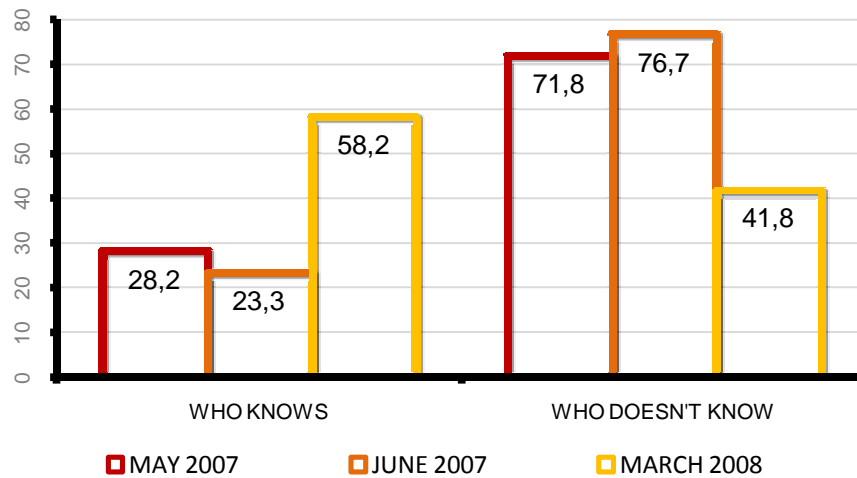


DID CURRENT POLITICAL ISSUES INFLUENCE THE SHOPPING BEHAVIORS? (%)

[Political orientation & Symbols of Izmir, June - 2007]



DO PARTICIPANTS KNOW WHAT "EXPO" MEANS? (%)



DO PARTICIPANTS KNOW THAT IZMIR IS THE OFFICAL CANDIDATE FOR EXPO 2015? (%)

